

LIGHTING FOR COMPLEX ENVIRONMENTS

2' X 4'

APPLICATIONS

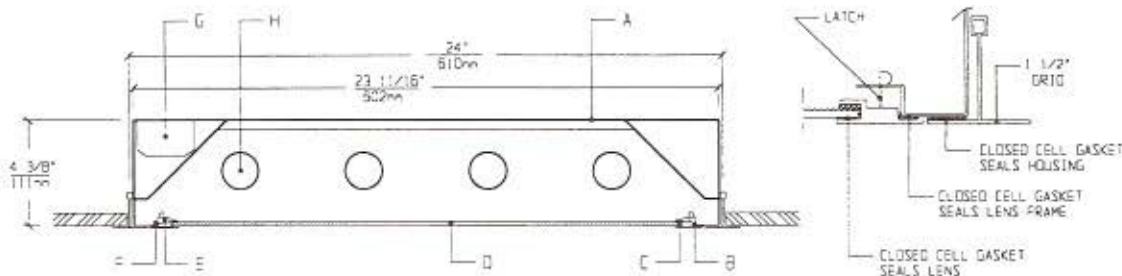
- Cleanrooms
- Food processing centers
- Hospitals
- Pharmaceutical and Biological labs
- Wet Locations

Totally sealed housings with Flush with Grid Lens Frames, gasketed lenses, and uniform lighting make CGE Series ideally suited for CLEANROOM, Hospital, Food processing, and Scientific lab areas, where contamination free environment must be achieved at a lower cost.

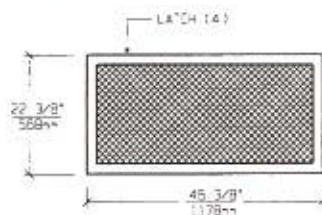
FEATURES

- ♦ Sealed, painted white, 20 gauge Housing seals to grid
- ♦ 2' X 4' nominal Housing size
- ♦ Same Housing fits 1" and 1-1/2" standard T-grid ceiling
- ♦ Lens Frame is flush with T-Grid and seals to Housing
- ♦ Lens is gasketed to extruded Lens Frame
- ♦ Suitable for Class 1,000 - Class 100,000 Cleanrooms
- ♦ Low brightness Lens installed smooth side to room
- ♦ No tools required to open Lens Frame for relamping
- ♦ Manufactured in accordance to NSF, FDA, USDA and Federal Standard 209D

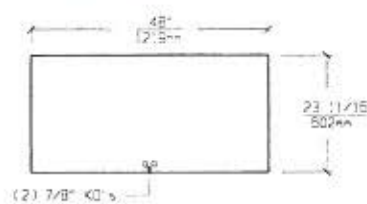
CROSS SECTION



LENS FRAME DIMENSIONS



TOP VIEW



SPECIFICATIONS

<p>A. HOUSING Die formed 20 gauge cold rolled steel Housing, with welded seams. Painted White.</p> <p>B. LENS FRAME Heavy aluminum extrusion with mitered corners. Painted white to match Grid.</p> <p>C. GASKET Closed cell gaskets prevent air and contaminants from entering the room.</p> <p>D. LENS Low brightness Lens with prisms up and smooth side to room for ease of cleaning. (See Options).</p> <p>E. LATCHING Two Latches allow to open Lens Frame without use of tools.</p>	<p>F. HINGE Two detachable Hinges for ease of installation and maintenance.</p> <p>G. BALLAST HPF, Class P, Energy saving Ballast. (See Voltage, Ballast Options).</p> <p>H. LAMPS 32W T-8 or 40W T-12 Lamps. See Lamp Options. (Lamps by others).</p> <p>I. FINISH Polyester Powder coat white finish with 92% reflectance.</p> <p>J. UL LISTED Suitable for Wet Locations.</p>
---	---

LAMP SELECTION



LAMPS: (2) 32W T-8
(2) 40W T-12



LAMPS: (3) 32W T-8
(3) 40W T-12



LAMPS: (4) 32W T-8
(4) 40W T-12

ORDERING INFORMATION

CGE - 24 -

No. of LAMPS	WATTAGE	VOLTAGE	BALLAST	LENS OPTION	OPTIONS
2=2 Lamps	32=32 Watts	120=120 Volts	EB=Electronic Ballast	12PA=.125"Prism. Acrylic	GF=GLR Fuse
3=3 Lamps	(T-8)	277=277 Volts	Ballast	15PA=.156"Prism. Acrylic	NL=Night Light(PL-7or 9)
4=4 Lamps	40=40 Watts	347=347 Volts	MB=Magnetic Ballast	15PG=.156"Prism. Glass	DB=Dimming Ballast
6=6 Lamps	(T-12)		EB2=(2) Electr. Ballasts	15PP=.156"Prism. P/C	EM=Emergency Lighting
			EBH=<10% THD El. Ballast	UD = UV Absorbing Overlay	CW=Cold Weather Ballast
				(Other Lens Options available. Consult Factory)	RF=Radio Frequency Interference Filter

(More than one Option can be specified)

EXAMPLE: CGE - 24 - 4 - 32 - 277 - EB - 12PA - GF - NL

- DESCRIPTION:
- CGE-24 = Series CGE, 2 feet by 4 feet nominal size
 - 4 = 4 Lamps
 - 32 = 32 Watts T-8 Lamps
 - 277 = 277 Volt Operation
 - EB = Electronic Ballast
 - 12PA = .125" Thick Prismatic Acrylic
 - GF = GLR Fuse
 - NL = Night Light for PL - 7 or 9

FIXTURE TYPE		COMMENTS
CATALOG NUMBER	CGE-24-	
JOB NAME		
APPROVAL		
DATE		

Dimensions and Specifications subject to change without notice
 Fixture guaranteed for one year against mechanical defects in manufacture.
 Copyright 2-97 CGE-24